

| Age           | Stratigraphic Units           | Map Symbol | Description   |
|---------------|-------------------------------|------------|---|
| Quaternary    | Alluvium                      | Qal        | alluvial sand and gravel  |
|               | Older alluvium and fan gravel | Qoal       | older alluvial and fan gravel   |
| Tertiary      | Rhyolite tuff                 | Trl        | white to yellow-brown, quartz-rich, welded crystal tuff w/ minor plagioclase and biotite crystals |
|               |                               |            | unconformity  |
| Pennsylvanian | Ely Limestone                 | Pe         | light gray limestone w/ interbedded shaly limestone and chert                                     |
|               | Chainman Shale                | Mc         | black carbonaceous shale and siltstone w/ interbedded, iron-rich quartzite                        |
| Mississippian | Joana Limestone               | Mj         | thin-bedded to massive, light gray, chert-bearing crinoidal limestone                             |
|               | Pilot Shale                   | MDp        | dark gray, carbonaceous, silty shale and mudstone   |
| Devonian      | Guilmette Limestone           | Dg         | primarily thick-bedded gray, fine-grained limestone w/ interbedded gray-brown dolomite            |
|               | Simonson Dolomite             | Ds         | medium-bedded gray-brown dolomite   |

| Symbols  |                                   |
|--|-----------------------------------|
|  | strike and dip of sediments       |
|  | strike and dip of overturned beds |
|  | normal fault                      |
|  | thrust fault                      |
|  | minor fold                        |
|  | claim post                        |
|  | drill hole                        |
| 4331500m utm coordinate-meters (NAD 27, Zone 11) | contact - inferred                |
|  | contact - concealed               |

**North Taylor Project  
TKO-HR Area  
Geologic Map**

by: P.J. Mato  
ping by: P.J. Mato

contour interval: 10 m

White Pine County, Nevada  
T14 & 15 N, R 65 E

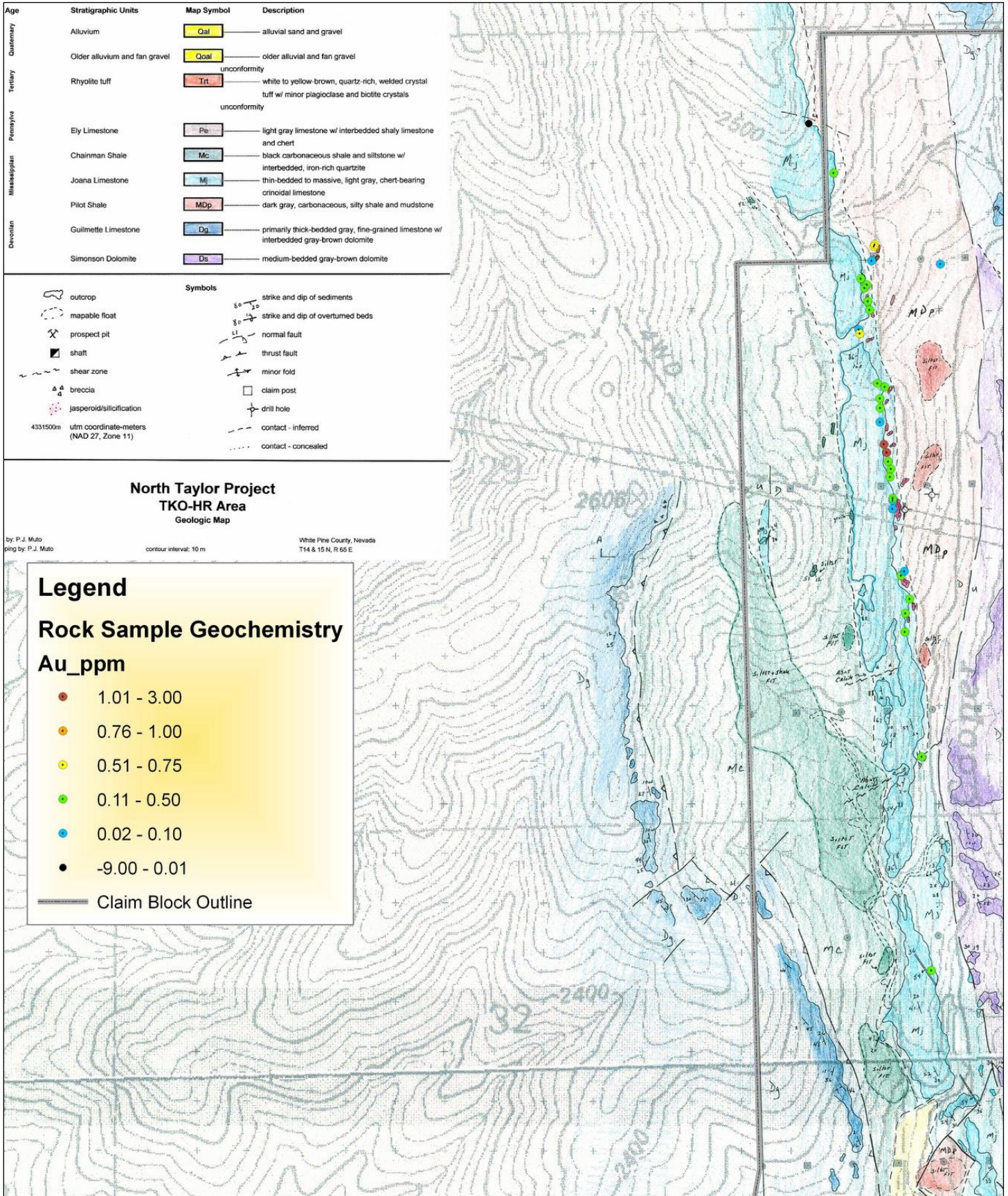
**Legend**

**Rock Sample Geochemistry**

**Au\_ppm**

- 1.01 - 3.00
- 0.76 - 1.00
- 0.51 - 0.75
- 0.11 - 0.50
- 0.02 - 0.10
- -9.00 - 0.01

**Claim Block Outline**





| Age           | Stratigraphic Units           | Map Symbol | Description   |
|---------------|-------------------------------|------------|---|
| Quaternary    | Alluvium                      | Qal        | alluvial sand and gravel  |
|               | Older alluvium and fan gravel | Qoal       | older alluvial and fan gravel   |
| Tertiary      | Rhyolite tuff                 | Trt        | white to yellow-brown, quartz-rich, welded crystal tuff w/ minor plagioclase and biotite crystals |
|               |                               |            | unconformity  |
| Pennsylvanian | Ely Limestone                 | Pe         | light gray limestone w/ interbedded shaly limestone and chert                                     |
|               | Chainman Shale                | Mc         | black carbonaceous shale and siltstone w/ interbedded, iron-rich quartzite                        |
| Mississippian | Joana Limestone               | Mj         | thin-bedded to massive, light gray, chert-bearing crinoidal limestone                             |
|               | Pilot Shale                   | MDp        | dark gray, carbonaceous, silty shale and mudstone   |
| Devonian      | Guilmette Limestone           | Dg         | primarily thick-bedded gray, fine-grained limestone w/ interbedded gray-brown dolomite            |
|               | Simonson Dolomite             | Ds         | medium-bedded gray-brown dolomite   |

| Symbols |                                   |
|---------|-----------------------------------|
|         | strike and dip of sediments       |
|         | strike and dip of overturned beds |
|         | normal fault                      |
|         | thrust fault                      |
|         | minor fold                        |
|         | claim post                        |
|         | drill hole                        |
|         | contact - inferred                |
|         | contact - concealed               |

**North Taylor Project  
TKO-HR Area  
Geologic Map**

by: P.J. Muto  
 ing by: P.J. Muto  
 contour interval: 10 m  
 White Pine County, Nevada  
 T14 & 15 N, R 65 E

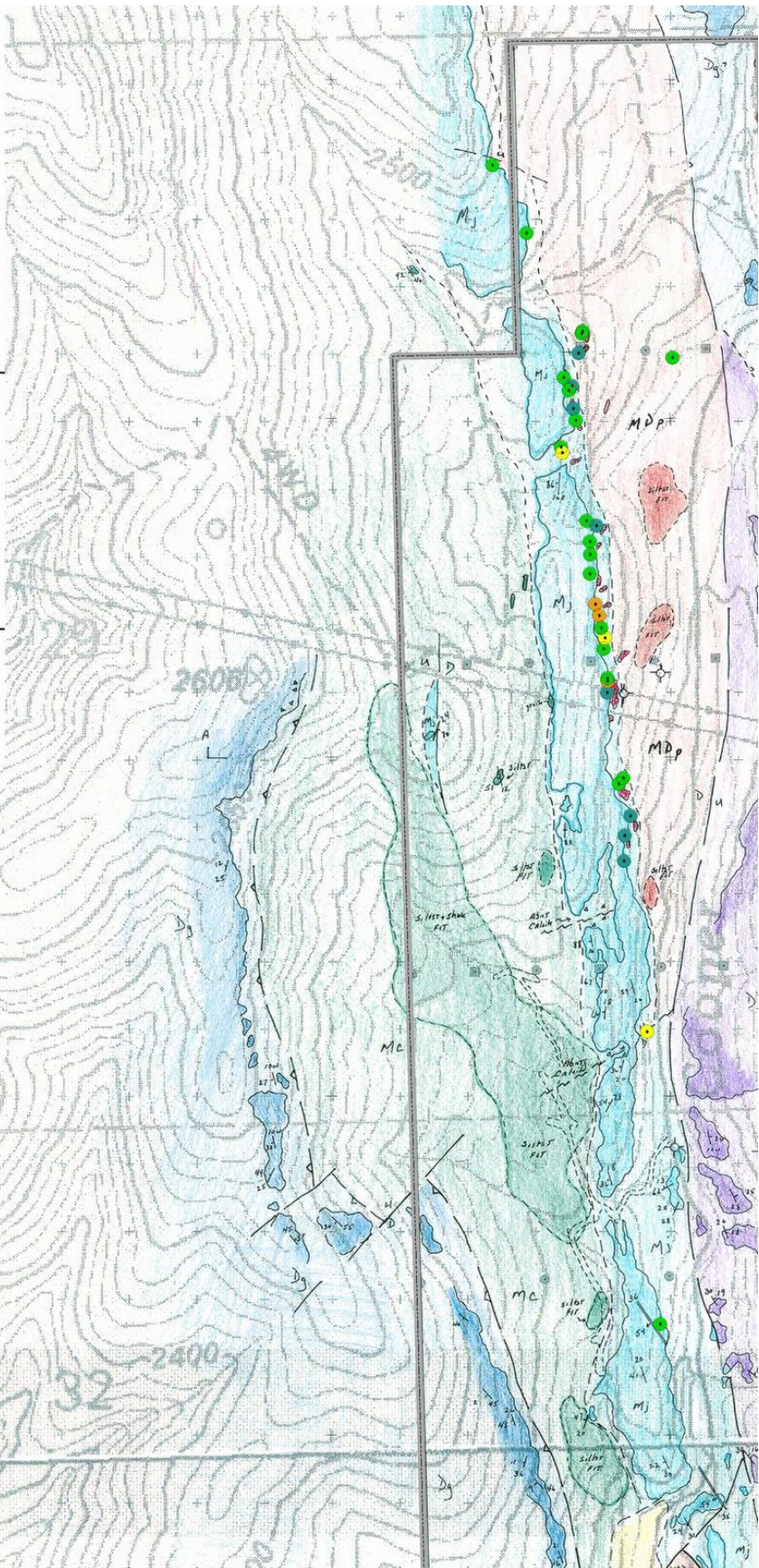
**Legend**

**Rock Sample Geochemistry**

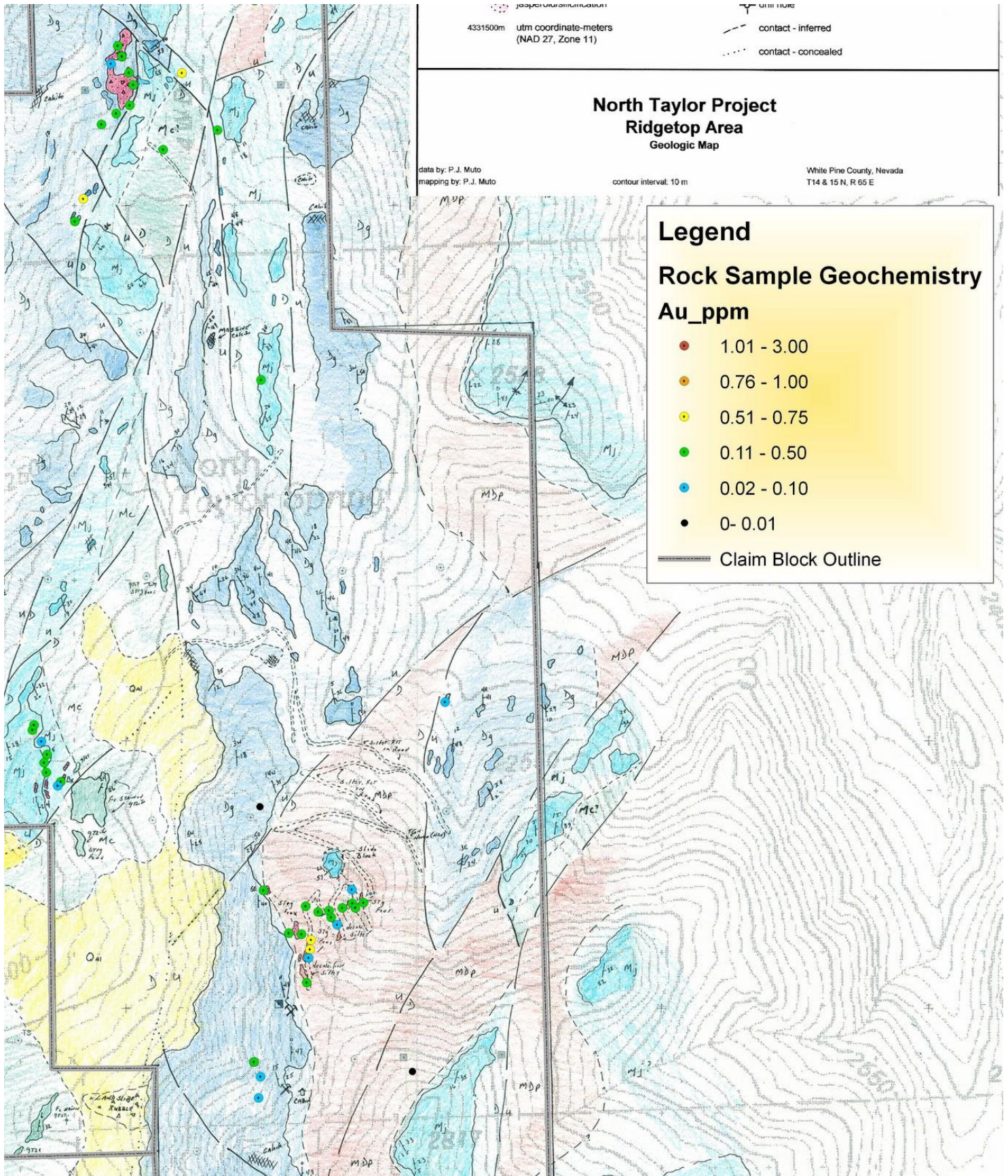
**As\_ppm**

- 851 - 13000
- 351 - 850
- 201 - 350
- 51 - 200
- 5 - 50
- 0 - 4

Claim Block Outline









### North Taylor Project Ridgetop Area Geologic Map

data by: P.J. Muto  
mapping by: P.J. Muto

contour interval: 10 m

White Pine County, Nevada  
T14 & 15 N, R 65 E

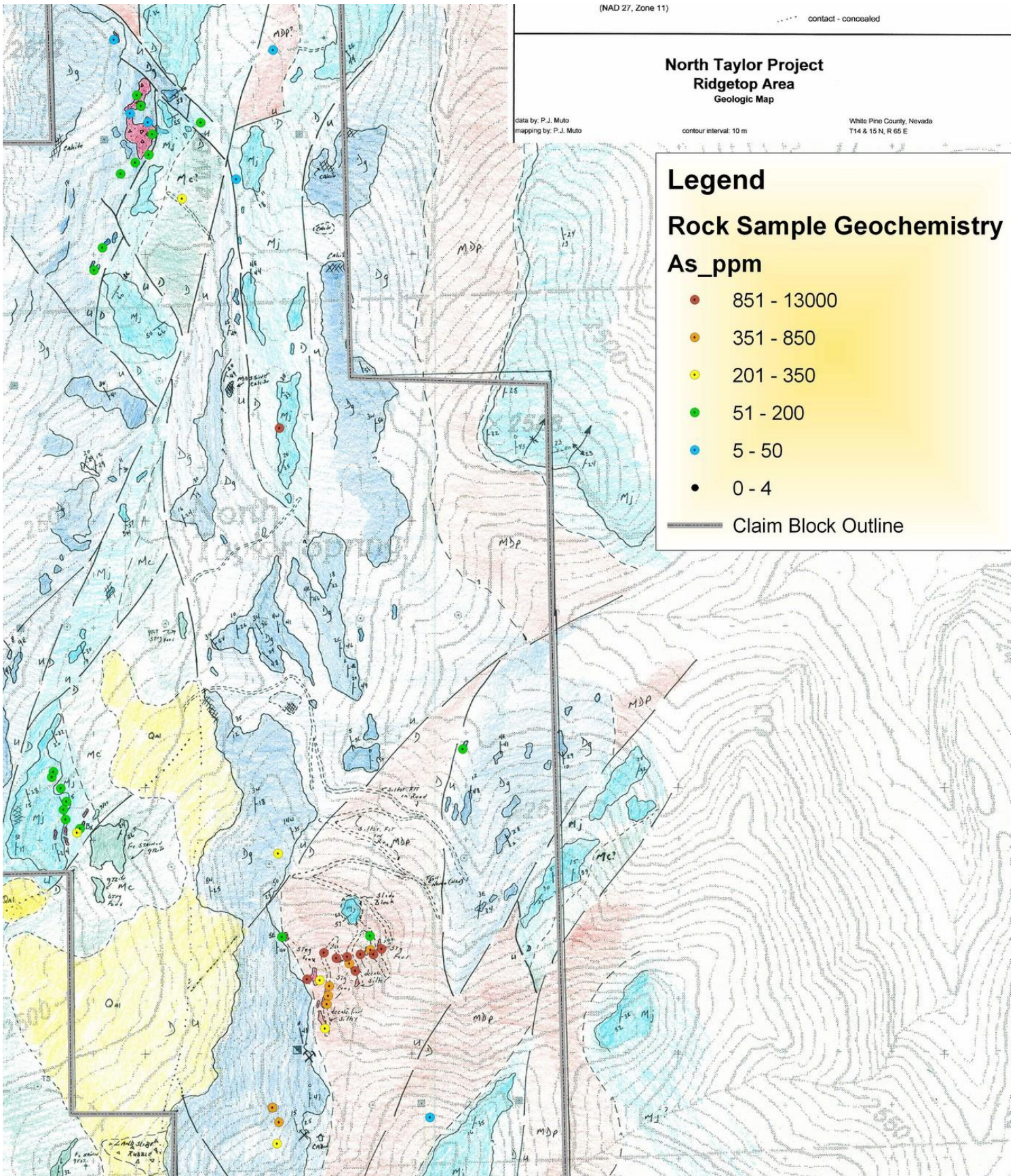
## Legend

### Rock Sample Geochemistry

#### As\_ppm

- 851 - 13000
- 351 - 850
- 201 - 350
- 51 - 200
- 5 - 50
- 0 - 4

— Claim Block Outline





(NAD 27, Zone 11)

contact - concealed

# North Taylor Project Ridgetop Area Geologic Map

data by: P.J. Muto  
mapping by: P.J. Muto

contour interval: 10 m

White Pine County, Nevada  
T14 & 15 N, R 65 E

## Legend

### Rock Sample Geochemistry

#### Hg\_ppm

- 11 - 40
- 6 - 10
- 4 - 5
- 2 - 3
- 1
- 0 - 0

Claim Block Outline

